

CORE LNGas hive: **EPT1**

Mobile unit to supply electricity generated by LNG to ferries, during its stay in port



Mobile LNG powered electricity generator to supply ferries' auxiliary engines. It will be able to navigate in a ship or to be placed in the wharf at port, which could be used for more than one vessel



Genset, containerized LNG tanks construction completed

Vessel and port modifications completed

Tests in Barcelona completed

Scheduled tests in Tenerife (Apr 2018) and Vigo (May 2018)

Construction finalized. Tests ongoing.

Partners involved



Gruposuadiaz



DRESSER-RAND
A Siemens Business



Port de Barcelona
LÍDER



Co-financed by the European Union
Connecting Europe Facility

<http://www.corelngashive.eu/>

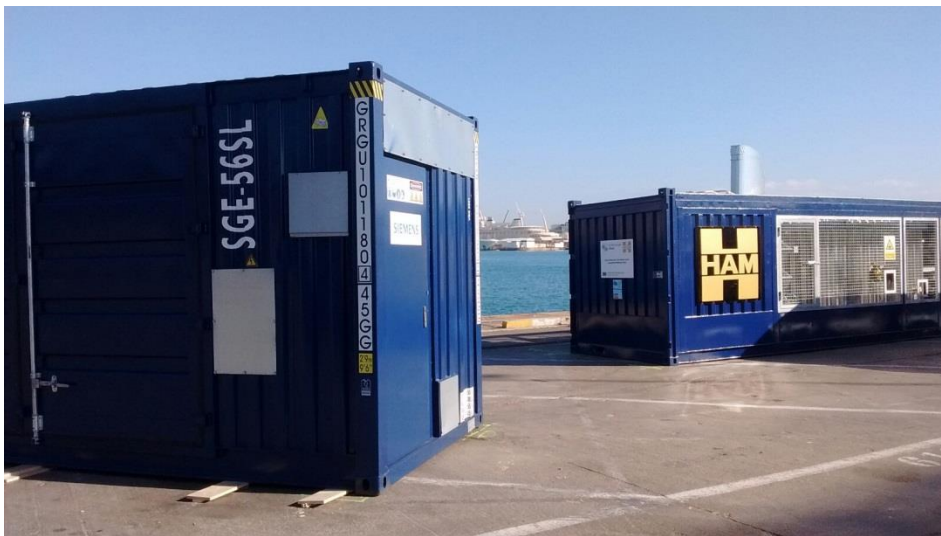




CORE LNGas hive: **EPT1**

Mobile unit to supply electricity generated by LNG to ferries, during its stay in port

Expected results



- On power supply system (OPS) in service
- Conclusions on economics and operability of the solution before a possible permanent implementation
- Emissions during ship calls in ports reduced

End date

December 2019

Total budget

2.300.000 €

tp://w

S